

Non-Destructive Examination Services

Background

Westinghouse has been producing complex, high integrity equipment at our Nuclear Components Manufacturing (NCM) facility in Newington, New Hampshire for over 40 years. This activity requires a robust Quality Assurance (QA) program and extensive inspection and non-destructive examination (NDE) capabilities. Let our Level II and Level III NDE Inspectors and other highly experienced personnel handle your outsourced NDE needs.



10' x 22' Radiography Exposure Vault

Description

NCM offers the following inspection services, either at our facility or yours:

Radiography (RT):

- Cobalt (Co-60) Gamma Source
- Iridium (Ir-192) Gamma Source
- X-ray Tube (320kV; 13mA)
- Computerized or Film

Ultrasonic (UT):

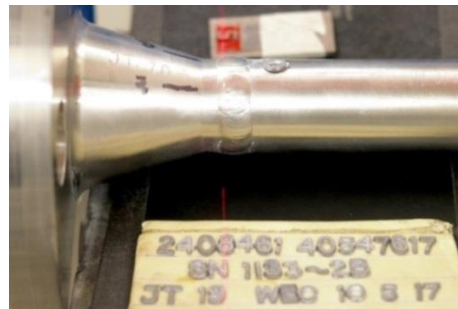
- Straight Beam or Shear Wave Flaw Detection
- Thickness Measurement

Others:

- Liquid Penetrant (PT)
- Magnetic Particle (MT)
- Positive Material Identification (PMI) using X-Ray Fluorescence (XRF)
- Coordinate Measuring Machine (CMM) and Faro Arm
- Visual (VT), Optics, and Laser Tracker

Benefits

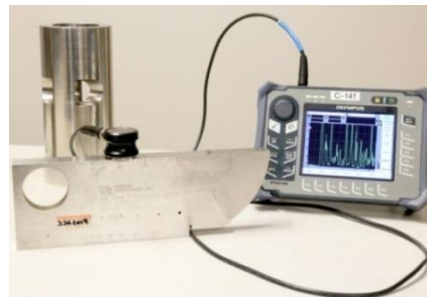
NCM is an ISO-9001 certified facility with an ASME NQA-1 compliant QA program and a culture of continuous learning and improvement, so you can be sure that your work will be performed to the highest of standards. We have a fully equipped facility with a dedicated staff available to support the demands of business requests, including expedited processing or traveling to your location, if needed.



Setting up a weld joint for x-ray

Experience

Our inspectors are certified to American Society of Nondestructive Testing (ASNT) SNT-TC-1A, Level II or III. They have the experience and proficiency to employ various methods to examine a wide range of metals and configurations.



Ultrasonic inspection equipment

For more information, please send an email to MFG-info@westinghouse.com.

